



Introduction

Mulloon Consulting is a specialist consultancy with an unrivalled reputation for providing high quality technical and practical advice to successfully rehydrate and restore agricultural landscapes. We support farmers in adapting to new and changing environmental conditions.

We deliver service excellence across the entire lifecycle of landscape rehydration and regeneration projects, from site assessments and planning, and on ground works to monitoring and review. We also provide education, having developed a curriculum to build capacity of landholders through interactive hands-on workshops and bootcamps.

Centralian Project

Working with the Charles Darwin University, Mulloon Consulting designed and supervised the construction of landscape rehydration works across four stations (Aileron, Ahakeye Aboriginal Land Trust, Glen Helen and Narwietooma stations) within 200 kms of Alice Springs, Northern Territory.

After a thorough initial site assessment and in-depth consultation with land managers and station owners, the key areas of concern and the issues they wanted to address were determined.

Mulloon Consulting produced detailed designs and plans for construction of a range of

structures and interventions to improve hydrological function and rehydration capacity across the landscape. Designs were based on high accuracy terrain mapping using LiDAR to provide reliable and fine scale digital models of the landscape. The designs and planning also took into account the available resources for construction. In this case, due to the distance and cost of importing material, it was only feasible to use the in-situ resources – earth and wood.

Mulloon Consulting then surveyed project sites to ground-truth the designs and mark out planned works using differential GPS and laser levels. Our team then supervised the construction of contours, earth banks and leaky

ABOVE: Setting up survey equipment at Glen Helen station.

BELOW: Constructing earth banks using a front-end loader for bulk earthmoving and a skid steer for placing woody material.



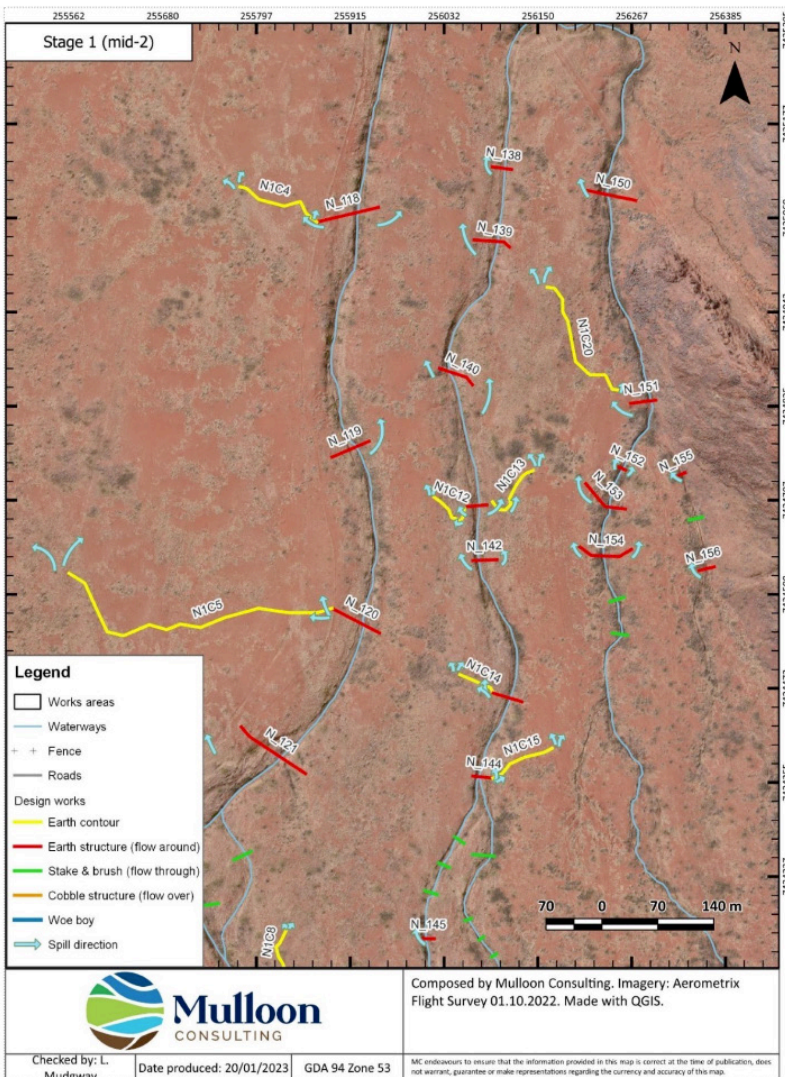


weirs, overseeing construction contractors, station workers and Aboriginal Rangers operating a variety of earthmoving equipment.

This project also included field days and ad-hoc educational activities to upskill local land managers about hydrological function and water cycling, as well as the practical elements of designing and constructing Landscape Rehydration interventions.

Capabilities

- Liaising and communicating with a wide range of land managers and stakeholders to determine key hydrological issues and concept solutions.
- Undertaking initial site assessment and desktop analysis of geographic and planning information.
- Sourcing and utilising high accuracy terrain mapping such as LiDAR and drone technology to survey project sites.
- Detailed designs and reports for implementing Landscape Rehydration and related intervention measures.
- Providing logistical support for sourcing materials and equipment.
- Surveying and marking out proposed construction works on-site.
- Supervision and implementation of construction works.
- Monitoring and provision of advice for long-term monitoring and maintenance of Landscape Rehydration interventions.
- Capacity building via educational workshops, field days and ad-hoc training programs.



ABOVE: Marking a contour and providing direction to a grader during the construction of a contour bank.

LEFT: Example of Landscape Rehydration plans for Narwietooma Station.

Mulloon Institute

PO Box 126, Bungendore, NSW 2621
p. 0492 911 394

e. info@themullooninstitute.org
w. mulloonconsulting.com.au

